

Model 80

Boiler Water Pressure Reducing Valve
With Fast Fill/Purge Lever (1/2" & 3/4")

WILKINS
a ZURN® company

□ Installation □ Maintenance Instructions

WARNING:

1. Allow system to cool before servicing.
2. Never open a pressurized system.
3. Always install a boiler pressure relief valve.

REPAIR KIT INSTRUCTIONS

HOW TO MAKE REPAIRS:

(Shut off service before starting disassembly)

1. Open drain plug on boiler or operate lever on relief valve to remove line pressure.
2. Note distance that adjustment bolt protrudes from bell housing. Loosen locknut on adjustment bolt, then turn adjustment bolt out of bell housing to remove spring tension.
3. Unscrew bell housing counterclockwise and remove spring, spring disc and friction ring.
4. While holding diaphragm, unscrew diaphragm bolt counterclockwise and remove bolt, diaphragm disc and diaphragms.
5. Remove cartridge counterclockwise using a 1 1/8" socket. Make sure cartridge gasket is removed from body.

TO REASSEMBLE:

1. While disassembled, open inlet of water service to flush out valve body and service line of debris.
2. Lubricate o-ring on replacement cartridge then thread into body clockwise.
3. Replace diaphragms, diaphragm disc and diaphragm bolt (It is necessary to hold diaphragm while tightening diaphragm bolt.).
4. Replace friction ring, spring, spring disc and bell housing. Tighten bell housing onto body by threading clockwise.
5. Turn adjustment bolt into bell housing to old setting.
6. Adjust regulator to desired pressure by turning adjustment bolt clockwise (into bell housing) to raise pressure or counterclockwise (out of bell housing) to lower pressure. **It is recommended a pressure gauge be installed downstream of the regulator to ensure pressure is reduced below 15psi.** NOTE: When reducing pressure, open a down stream valve to relieve pressure.
7. Tighten locknut when desired pressure is achieved.

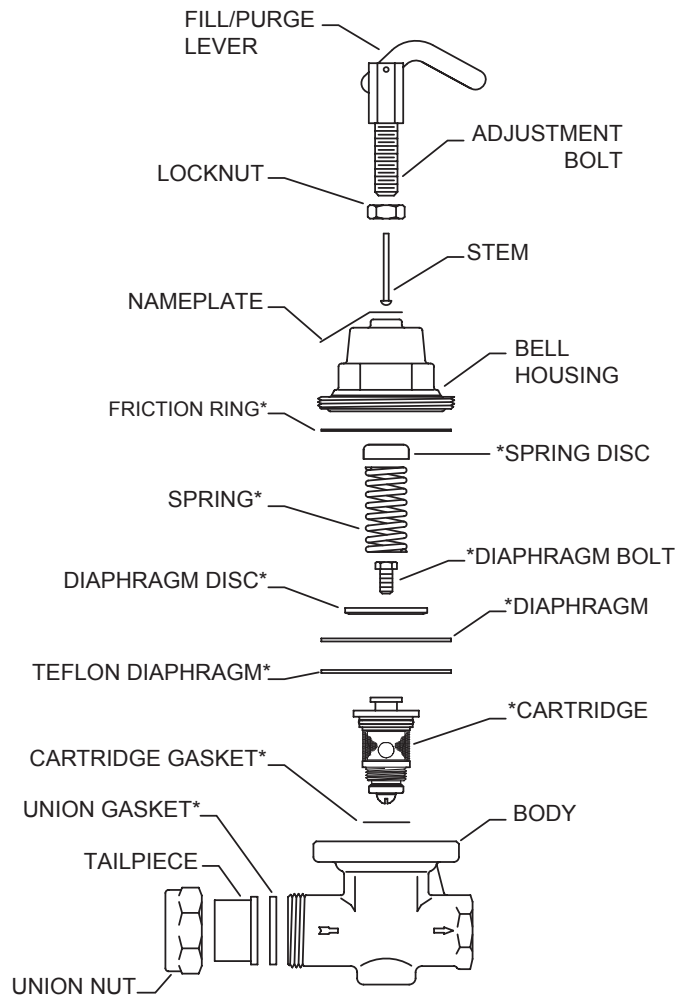
INSTALLATION INSTRUCTIONS

Install valve in line with arrow on valve body pointing in direction of flow. Before installing reducing valve, flush out line to remove loose dirt and scale which might damage seal ring and seat. All valves will be furnished with stock settings to reduce to 15 psi. To fill the system, open supply shut-off valve (Leave this valve open) and engage the fast fill/purge lever. To readjust reduced pressure loosen outer locknut and turn adjustment bolt clockwise (into bell housing) to raise reduced pressure, or counterclockwise (out of bell housing) to lower reduced pressure.

WARRANTY: WILKINS Valves are guaranteed against defects of material or workmanship when used for the services recommended. If in any recommended service, a defect develops due to material or workmanship, and the device is returned, freight prepaid, to WILKINS within 12 months from date of purchase, it will be repaired or replaced free of charge. WILKINS' liability shall be limited to our agreement to repair or replace the valve only.

Proposition 65 Warning This product contains chemicals known to the State of California to cause cancer or birth defects or other reproductive harm.

This product is not to be used to convey water for human consumption through cooking or drinking in California or Vermont.
California H&S Code §116875, VSA §2470h



* INDICATES PARTS SUPPLIED IN REPAIR KITS

NOTICE: Annual inspection and maintenance is required of all plumbing system components. To ensure proper performance and maximum life, this product must be subject to regular inspection, testing and cleaning.

CAUTION: Anytime a reducing valve is adjusted, a pressure gauge must be used downstream to verify correct pressure setting. Do not bottom out adjustment bolt on bell housing. Valve may be installed in any position.